



keychain

What it's about:

When there is no bag available to embroider the patterns that the children create either with the Embroidery Designer (tablet/phone) or with Turtle Stitch (computer), the keychain serves as a great alternative, allowing the children to still stitch their patterns and use them in a useful way.



What you need:

- Embroidery pattern you want on the keychain
- Fabric for the top (preferably sturdy)
- Felt for the back
- Thread in the desired colour
- Cotton stuffing (optional)
- Scissors
- Pins (at least 4)
- Hole punch (+hammer +base) (Alternatively, you can use scissors)

Preparation of the program:

Patterns in Embroidery Designer:

Export the desired embroidery pattern and upload it to the embroidery machine.

Patterns in Turtle Stitch:

Ensure that the embroidery pattern is not larger than approximately 4x4 cm. Check if after each colour change (which starts a new object), the „tie stitch“ and „trim“ block is enabled. It's important to execute everything in the correct sequence (as it will be embroidered that way). Then click on 'Export as Tajima/DST' and load the pattern onto the embroidery machine.



Step by step:

Embroidery machine preparations:

1. Select the desired pattern on the embroidery machine.
2. Click on "Add" and choose one of the pre-made frames (Tip: If you have enough time, it's best to choose the wider one with a "zigzag stitch" for better durability).
3. Click on "Add" and select the small "o" from the standard font for the keyring hole.
4. Use "Select" to adjust the size and position of your own pattern as well as the small circle.



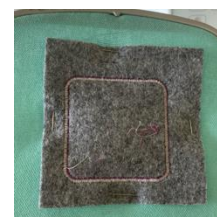
Embroider the front side:

1. Stretch the fabric for the top into the embroidery hoop and insert it into the embroidery machine.
2. Start the embroidery process for your own pattern.
3. Remove the embroidery hoop (with fabric stretched in it) from the machine.



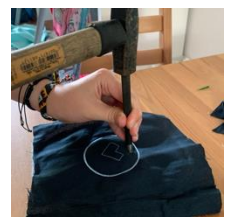
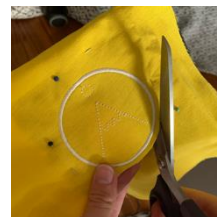
Embroider the frame with the back and filling:

1. Cut a piece of felt and attach it to the already embroidered and still hooped fabric with pins - Caution: Leave one side open!
2. Stuff a small piece of cotton into the centre of the open side to give the keychain some filling. (Tip: Make sure it's a small piece in the middle so it doesn't stick out at the edges when you cut it.)
3. Secure the fourth side with a pin as well. (Caution: Make sure the pins are placed far enough away from the edge so the machine won't stitch into them during the frame embroidery.)
4. Allow the machine to continue the embroidery for the frame.
5. Let the machine embroider the circle for the keyring hole.



Complete:

1. Remove the embroidery hoop.
2. Cut along the frame with sharp scissors (Tip: Leave the pins inside to prevent distortion).
3. Use a hole punch (on a piece of wood with a hammer) to punch out the hole for the keychain.



Done!